

## DECIBEL - Main Result

Calculation: Mūra: 13 tuulikut NORDEX N175/6.X Mode 6+ 2dB+trafod

Noise calculation model:

ISO 9613-2:2024 General

Wind speed (at 10 m height):

Highest noise value

Ground attenuation:

General, Ground factor: 0,5

Meteorological coefficient, CO:

Selected option: All receptors downwind of all wind turbines (Cmet = 0)

Type of demand in calculation:

1: WTG noise is compared to demand (DK, DE, SE, NL etc.)

Noise values in calculation:

All noise values are mean values (Lwa) (Normal)

Pure tones:

Fixed penalty added to source noise of WTGs with pure tones

Model: 5,0 dB(A)

Height above ground level, when no value in NSA object:

4,0 m; Don't allow override of model height with height from NSA object

Uncertainty margin:

Uncertainty added to source noise level of the WTGs in the calculation

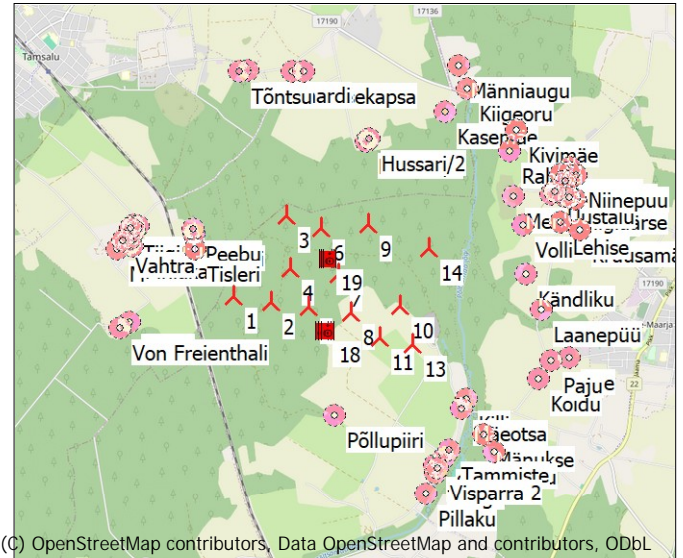
Deviation from "official" noise demands. Negative is more

restrictive, positive is less restrictive.:

0,0 dB(A)

All coordinates are in

Estonian Lambert L-EST97-EST97 (EE)



(C) OpenStreetMap contributors, Data OpenStreetMap and contributors, ODbL

Scale 1:100 000

▲ New WTG  
■ NEO

🏠 Noise sensitive area

## WTGs

	East	North	Z	Row data/Description	WTG type			Power, rated [kW]	Rotor diameter [m]	Hub height [m]	Noise data		Wind speed [m/s]	Lwa,ref [dB(A)]	Uncertainty [dB(A)]
					Valid	Manufact.	Type-generator				Creator	Name			
1	623 362	6 556 898	118,6	NORDEX N175/6.X 6800 175.... Yes	NORDEX	N175/6.X-6 800	6 800	175,0	179,0	EMD	N175_6_X_R10_HH179_STE STE Mode 6	5,0	104,0	2,0 g	
2	623 862	6 556 848	115,5	NORDEX N175/6.X 6800 175.... Yes	NORDEX	N175/6.X-6 800	6 800	175,0	179,0	EMD	N175_6_X_R10_HH179_STE STE Mode 6	5,0	104,0	2,0 g	
3	624 027	6 557 994	120,0	NORDEX N175/6.X 6800 175.... Yes	NORDEX	N175/6.X-6 800	6 800	175,0	179,0	EMD	N175_6_X_R10_HH179_STE STE Mode 6	5,0	104,0	2,0 g	
4	624 102	6 557 297	118,9	NORDEX N175/6.X 6800 175.... Yes	NORDEX	N175/6.X-6 800	6 800	175,0	179,0	EMD	N175_6_X_R10_HH179_STE STE Mode 6	5,0	104,0	2,0 g	
5	624 362	6 556 798	112,1	NORDEX N175/6.X 6800 175.... Yes	NORDEX	N175/6.X-6 800	6 800	175,0	179,0	EMD	N175_6_X_R10_HH179_STE STE Mode 6	5,0	104,0	2,0 g	
6	624 500	6 557 847	114,6	NORDEX N175/6.X 6800 175.... Yes	NORDEX	N175/6.X-6 800	6 800	175,0	179,0	EMD	N175_6_X_R10_HH179_STE STE Mode 6	5,0	104,0	2,0 g	
7	624 755	6 557 245	110,5	NORDEX N175/6.X 6800 175.... Yes	NORDEX	N175/6.X-6 800	6 800	175,0	179,0	EMD	N175_6_X_R10_HH179_STE STE Mode 6	5,0	104,0	2,0 g	
8	624 926	6 556 735	110,0	NORDEX N175/6.X 6800 175.... Yes	NORDEX	N175/6.X-6 800	6 800	175,0	179,0	EMD	N175_6_X_R10_HH179_STE STE Mode 6	5,0	104,0	2,0 g	
9	625 108	6 557 920	110,0	NORDEX N175/6.X 6800 175.... Yes	NORDEX	N175/6.X-6 800	6 800	175,0	179,0	EMD	N175_6_X_R10_HH179_STE STE Mode 6	5,0	104,0	2,0 g	
10	625 579	6 556 858	110,0	NORDEX N175/6.X 6800 175.... Yes	NORDEX	N175/6.X-6 800	6 800	175,0	179,0	EMD	N175_6_X_R10_HH179_STE STE Mode 6	5,0	104,0	2,0 g	
11	625 316	6 556 411	110,0	NORDEX N175/6.X 6800 175.... Yes	NORDEX	N175/6.X-6 800	6 800	175,0	179,0	EMD	N175_6_X_R10_HH179_STE STE Mode 6	5,0	104,0	2,0 g	
12	625 760	6 556 346	110,0	NORDEX N175/6.X 6800 175.... Yes	NORDEX	N175/6.X-6 800	6 800	175,0	179,0	EMD	N175_6_X_R10_HH179_STE STE Mode 6	5,0	104,0	2,0 g	
14	625 927	6 557 629	110,0	NORDEX N175/6.X 6800 175.... Yes	NORDEX	N175/6.X-6 800	6 800	175,0	179,0	EMD	N175_6_X_R10_HH179_STE STE Mode 6	5,0	104,0	2,0 g	

## NEOs

	East	North	Row data/Description	Elevation above ground [m]	Noise source	Name	Noise value [dB(A)]	Uncertainty [dB(A)]
14	624 543	6 556 496	Noise Emitter Object: Noise profile: trafo (1)		2,0 Noise profile	Trafo	97,0	5,0
15	624 562	6 557 455	Noise Emitter Object: Noise profile: trafo (1)		2,0 Noise profile	Trafo	97,0	5,0
16	624 591	6 557 456	Noise Emitter Object: Noise profile: BESS (1)		2,0 Noise profile	BESS 85	85,0	2,0
17	624 582	6 556 497	Noise Emitter Object: Noise profile: BESS (1)		2,0 Noise profile	BESS 85	85,0	2,0
18	624 621	6 556 498	Noise Emitter Object: Noise profile: BESS (1)		2,0 Noise profile	BESS 85	85,0	2,0
19	624 616	6 557 456	Noise Emitter Object: Noise profile: BESS (1)		2,0 Noise profile	BESS 85	85,0	2,0

g) Data calculated from data for other wind speed (uncertain)

## Calculation Results

### Sound level

Noise sensitive area

No.	Name	East	North	Z	Immission height [m]	Demands Noise [dB(A)]	Preload [dB(A)]	Sound level New noise sources [dB(A)]	Sum [dB(A)]
Aarepi	EE00933590	622 821	6 557 712	120,0	4,0	40,0	28,6	38,9	39,3
Hussari/1	EE00934096	625 057	6 559 017	120,0	4,0	40,0	28,4	38,1	38,5
Hussari/2	EE00934101	625 093	6 559 052	120,0	4,0	40,0	28,2	37,8	38,3
Härma	EE00951139	627 774	6 558 747	120,0	4,0	40,0	22,3	30,8	31,3
Jänesekapsa	EE01896723	624 047	6 559 903	120,0	4,0	40,0	24,8	33,0	33,6
Jõepere	EE00853288	626 106	6 554 752	108,6	4,0	40,0	25,5	33,9	34,5
Kase	EE01685562	621 961	6 557 551	120,0	4,0	40,0	25,3	34,1	34,6
Kasemäe	EE00864280	626 084	6 559 437	110,6	4,0	40,0	24,9	33,8	34,3

To be continued on next page...

## DECIBEL - Main Result

Calculation: Müra: 13 tuulikut NORDEX N175/6.X Mode 6+ 2dB+trafod

...continued from previous page

No.	Name	East	North	Z [m]	Immission height [m]	Demands		Sound level		Sum [dB(A)]
						Noise [dB(A)]	Preload [dB(A)]	New noise sources [dB(A)]		
Kiigeoru	EE00951121	626 369	6 559 759	110,0	4,0	40,0	23,5	31,8	32,4	
Killi	EE00951619	626 493	6 555 649	110,0	4,0	40,0	26,7	37,4	37,8	
Kivimäe	EE00951118	627 036	6 559 229	120,0	4,0	40,0	23,3	32,0	32,5	
Koidu	EE00951633	627 435	6 555 942	110,0	4,0	40,0	24,0	33,3	33,8	
Kotka	EE00951147	627 707	6 558 372	120,0	4,0	40,0	22,9	31,8	32,3	
Kruusamäe	EE00816204	627 921	6 557 929	119,7	4,0	40,0	22,7	31,5	32,1	
Kuslapuu	EE01661076	621 932	6 557 592	120,0	4,0	40,0	25,2	33,9	34,5	
Kändliku	EE00951103	627 223	6 557 331	113,9	4,0	40,0	25,2	35,6	36,0	
Laanepüü	EE00951094	627 456	6 556 854	113,6	4,0	40,0	24,5	34,3	34,7	
Lehise	ME00864943	627 663	6 558 033	120,0	4,0	40,0	23,4	32,5	33,0	
Lepiku	EE01071858	622 006	6 557 801	120,0	4,0	40,0	25,3	34,0	34,5	
Mere	EE00952152	627 040	6 558 344	120,0	4,0	40,0	24,8	34,9	35,3	
Mäe	EE00934148	624 206	6 559 907	120,0	4,0	40,0	24,8	33,1	33,7	
Mäeotsa	EE00951504	626 440	6 555 522	110,0	4,0	40,0	26,6	37,0	37,4	
Männiaugu	EE00951125	626 253	6 560 058	110,0	4,0	40,0	22,9	30,9	31,6	
Männiku	EE00849642	627 760	6 558 692	120,0	4,0	40,0	22,4	30,9	31,5	
Mänukse	EE00852116	626 747	6 555 172	110,0	4,0	40,0	24,9	34,0	34,5	
Möisniku	EE01016836	621 807	6 557 475	120,0	4,0	40,0	24,9	33,4	34,0	
Niinepuu	EE00951141	627 847	6 558 657	120,0	4,0	40,0	22,2	30,7	31,3	
Pae	EE00951635	627 840	6 556 236	111,6	4,0	40,0	23,1	31,9	32,5	
Paju	EE00951498	627 609	6 556 186	111,0	4,0	40,0	23,7	32,9	33,4	
Papli	EE01660489	622 071	6 557 791	120,0	4,0	40,0	25,5	34,3	34,9	
Papli	EE00851957	627 649	6 558 659	120,0	4,0	40,0	22,7	31,4	32,0	
Peebu	EE00933643	622 800	6 557 772	120,0	4,0	40,0	28,4	38,6	39,0	
Peetri	EE00856810	621 996	6 556 525	112,8	4,0	40,0	25,5	34,3	34,8	
Pihlaka	EE00840588	621 995	6 557 526	120,0	4,0	40,0	25,5	34,3	34,8	
Pillaku	EE00843173	626 007	6 554 368	105,6	4,0	40,0	24,6	32,3	33,0	
Poe	ME01682539	621 972	6 557 632	120,0	4,0	40,0	25,3	34,1	34,6	
Priidu	EE00951146	627 854	6 558 341	120,0	4,0	40,0	22,6	31,2	31,8	
Pöllupiiri	EE00814147	624 758	6 555 362	110,0	4,0	40,0	31,3	38,3	39,1	
Rahula	EE00951116	626 960	6 558 939	120,0	4,0	40,0	24,0	33,2	33,7	
Regle	EE01004142	627 720	6 558 573	120,0	4,0	40,0	22,7	31,3	31,9	
Salumardi	EE00934320	623 452	6 559 906	120,0	4,0	40,0	24,2	32,2	32,8	
Selja	EE00852199	626 224	6 554 855	109,7	4,0	40,0	25,5	34,2	34,7	
Siimu	ME02483733	626 890	6 554 954	110,0	4,0	40,0	24,1	32,7	33,2	
Sireli	EE01661498	622 026	6 557 733	120,0	4,0	40,0	25,4	34,2	34,7	
Sõnumi	EE00951148	627 526	6 558 388	120,0	4,0	40,0	23,4	32,5	33,0	
Tammiste	EE00951765	626 295	6 554 962	110,0	4,0	40,0	25,6	34,5	35,1	
Tengo	EE00952191	626 121	6 554 651	107,9	4,0	40,0	25,2	33,4	34,0	
Tiigi	EE01055934	621 975	6 557 765	120,0	4,0	40,0	25,2	33,9	34,4	
Tiigiäärse	EE00951477	627 775	6 558 356	120,0	4,0	40,0	22,7	31,5	32,1	
Tisleri	EE00933703	622 836	6 557 509	120,0	4,0	40,0	28,9	39,8	40,1	
Tõntsu	EE00935620	623 350	6 559 892	120,0	4,0	40,0	24,1	32,1	32,7	
Uustalu	EE02723679	627 579	6 558 432	120,0	4,0	40,0	23,2	32,2	32,7	
Vahtra	EE01006750	621 865	6 557 595	120,0	4,0	40,0	25,0	33,6	34,1	
Visparra 2	EE00952192	626 143	6 554 709	108,4	4,0	40,0	25,3	33,6	34,2	
Volli	EE00951109	627 178	6 557 965	118,9	4,0	40,0	24,9	35,1	35,5	
Von Freienthali	EE01799587	621 872	6 556 425	111,7	4,0	40,0	25,1	33,4	34,0	

## Distances (m)

NSA	WTG / NEO																		
	1	2	3	4	5	6	7	8	9	10	11	13	14	14	15	16	17	18	19
Aarepi	977	1353	1238	1346	1791	1684	1989	2320	2296	2886	2813	3240	2108	3106	1759	1788	2139	2171	1813
Hussari/1	2713	2476	1451	1967	2324	1295	1797	2285	1098	2220	2618	2761	2572	1637	1638	1628	2564	2555	1621
Hussari/2	2762	2523	1501	2015	2369	1342	1837	2322	1131	2246	2649	2786	2613	1649	1682	1672	2605	2596	1665
Härma	4782	4347	3820	3946	3928	3394	3371	3486	2790	2895	3390	3133	3936	2158	3461	3434	3904	3871	3410
Jänese kapsa	3081	3060	1909	2606	3120	2105	2750	3287	2249	3408	3715	3947	3442	2950	2501	2506	3447	3452	2512
Jõepere	3482	3070	3850	3238	2688	3486	2835	2307	3320	2170	1837	1631	2341	2882	3112	3099	2316	2292	3086
Kase	1545	2026	2112	2156	2516	2556	2810	3074	3168	3683	3542	3984	2789	3966	2602	2631	2825	2860	2656
Kasemäe	3721	3411	2512	2916	3150	2243	2562	2939	1803	2627	3121	3107	3319	1814	2498	2480	3300	3281	2465
Kiigeoru	4149	3841	2932	3346	3576	2673	2987	3350	2229	3006	3509	3466	3738	2175	2927	2909	3719	3699	2893
Killi	3370	2890	3401	2903	2420	2966	2359	1906	2659	1515	1401	1011	2125	2058	2643	2623	2090	2055	2604
Kivimäe	4350	3967	3252	3512	3613	2887	3022	3266	2330	2782	3300	3152	3698	1946	3043	3020	3671	3644	2999

To be continued on next page...

## DECIBEL - Main Result

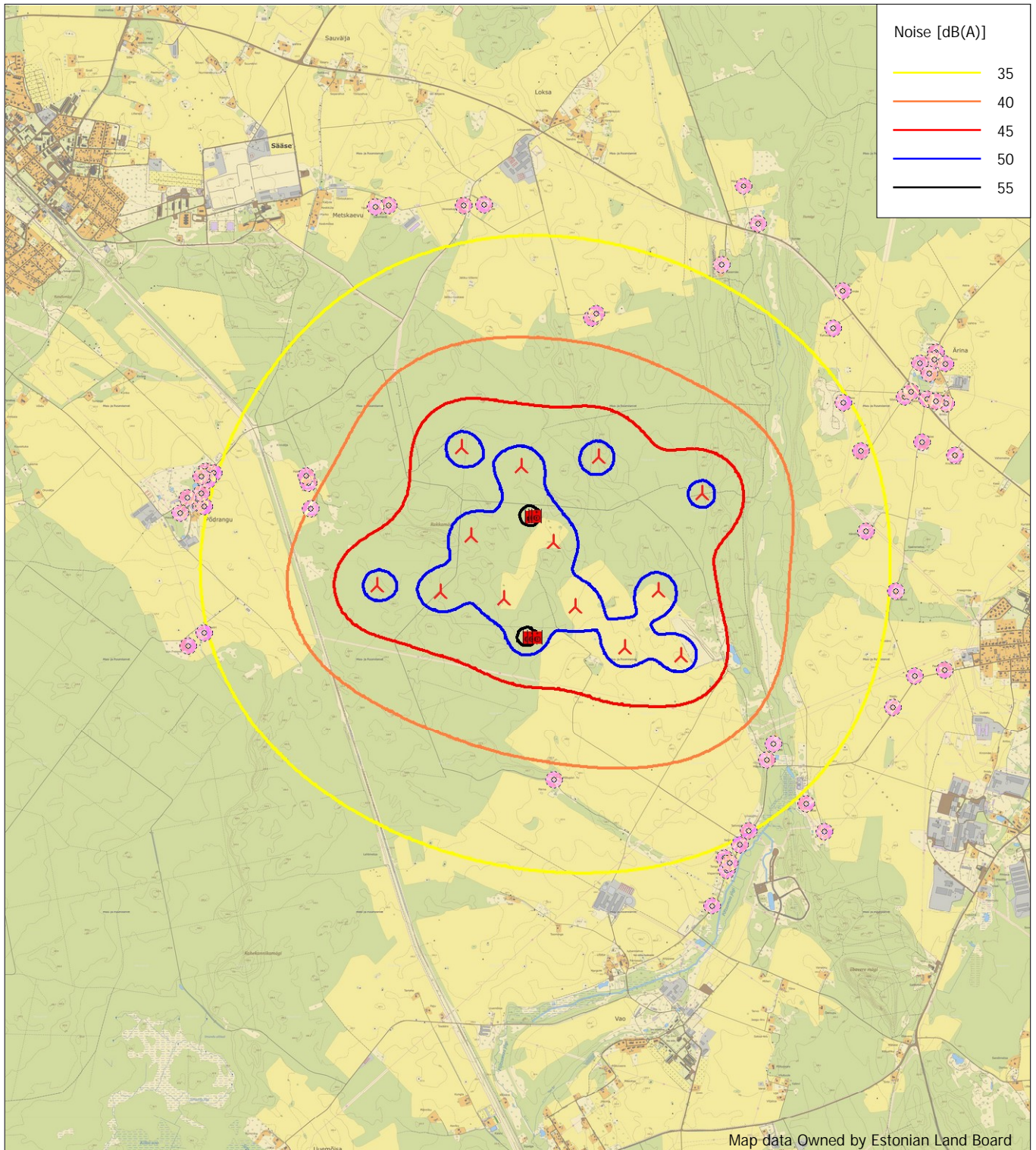
Calculation: Mürä: 13 tuulikut NORDEX N175/6.X Mode 6+ 2dB+trafod

...continued from previous page

NSA	WTG / NEO																		
	1	2	3	4	5	6	7	8	9	10	11	13	14	14	15	16	17	18	19
Koidu	4182	3685	3977	3597	3189	3498	2979	2630	3053	2069	2169	1722	2944	2262	3246	3221	2905	2867	3199
Kotka	4586	4134	3698	3760	3695	3248	3158	3225	2637	2610	3091	2808	3677	1928	3274	3247	3643	3608	3222
Kruusamäe	4673	4199	3893	3870	3733	3421	3238	3223	2812	2575	3014	2678	3668	2016	3392	3363	3632	3596	3338
Kuslapuu	1589	2067	2132	2189	2555	2579	2843	3113	3191	3719	3583	4024	2830	3993	2632	2661	2866	2902	2686
Kändliku	3884	3394	3263	3120	2909	2770	2468	2372	2194	1710	2116	1763	2806	1329	2663	2634	2768	2731	2609
Laanepüü	4093	3593	3613	3382	3094	3118	2729	2532	2578	1877	2185	1770	2934	1714	2955	2928	2895	2856	2903
Lehise	4447	3981	3635	3636	3524	3168	3012	3029	2557	2392	2853	2543	3477	1782	3154	3126	3442	3406	3101
Lepiku	1629	2086	2029	2155	2560	2493	2804	3107	3103	3694	3589	4025	2852	3923	2578	2607	2887	2921	2632
Mere	3950	3511	3032	3118	3091	2587	2534	2655	1977	2083	2589	2372	3105	1322	2631	2604	3073	3041	2580
Mäe	3124	3078	1921	2612	3112	2081	2718	3252	2182	3343	3667	3885	3427	2855	2477	2480	3430	3433	2485
Mäeotsa	3371	2898	3453	2935	2438	3027	2409	1940	2742	1589	1433	1068	2132	2168	2695	2675	2098	2064	2658
Männiaugu	4281	4001	3035	3499	3767	2821	3186	3577	2424	3269	3764	3743	3950	2450	3103	3086	3932	3914	3073
Männiku	4748	4311	3796	3914	3889	3367	3334	3443	2761	2849	3342	3082	3894	2118	3428	3401	3861	3828	3377
Mänukse	3798	3335	3918	3392	2885	3492	2874	2399	3198	2050	1892	1533	2570	2589	3159	3140	2537	2505	3123
Möisniku	1658	2148	2279	2301	2642	2718	2956	3205	3330	3821	3666	4110	2905	4121	2754	2783	2942	2978	2808
Niinepuu	4816	4375	3876	3983	3949	3442	3398	3496	2836	2894	3383	3113	3947	2177	3497	3470	3914	3880	3446
Pae	4525	4024	4197	3884	3522	3707	3245	2956	3208	2344	2529	2082	3306	2366	3497	3470	3267	3229	3446
Paju	4305	3804	4011	3677	3303	3524	3043	2738	3042	2138	2303	1855	3081	2215	3300	3274	3042	3003	3250
Papli	1570	2024	1966	2090	2496	2429	2738	3043	3039	3629	3525	3961	2790	3859	2513	2541	2824	2858	2566
Papli	4633	4197	3682	3798	3776	3251	3220	3333	2646	2743	3239	2985	3784	2006	3313	3286	3751	3719	3262
Peebu	1039	1407	1247	1385	1840	1701	2024	2365	2312	2924	2859	3284	2159	3129	1789	1818	2191	2221	1843
Peetri	1415	1893	2505	2242	2381	2830	2850	2936	3409	3597	3321	3767	2546	4081	2728	2755	2585	2624	2779
Pihlaka	1504	1986	2085	2119	2476	2525	2774	3035	3137	3645	3502	3945	2748	3932	2567	2596	2784	2819	2621
Pillaku	3659	3278	4130	3493	2934	3790	3137	2602	3663	2526	2156	1993	2582	3261	3408	3397	2561	2541	3386
Poe	1571	2045	2086	2155	2530	2536	2809	3086	3148	3688	3559	3999	2810	3954	2595	2624	2845	2880	2649
Priidu	4717	4261	3842	3893	3817	3389	3286	3339	2777	2715	3187	2891	3789	2054	3408	3380	3755	3720	3356
Pöllupiiri	2075	1735	2731	2042	1489	2497	1882	1383	2581	1706	1188	1404	1154	2550	2102	2100	1148	1144	2098
Rahula	4135	3737	3081	3295	3366	2691	2780	2998	2113	2497	3015	2857	3436	1668	2819	2795	3408	3380	2773
Regle	4667	4225	3737	3835	3797	3300	3248	3343	2692	2742	3232	2966	3795	2026	3349	3322	3761	3728	3298
Salumardi	3009	3085	1996	2688	3238	2310	2962	3496	2585	3716	3960	4242	3579	3362	2690	2701	3591	3602	2712
Selja	3515	3090	3830	3234	2691	3452	2805	2284	3261	2104	1801	1561	2349	2789	3086	3071	2321	2295	3057
Siimu	4027	3571	4175	3641	3128	3751	3131	2650	3459	2311	2144	1792	2807	2842	3416	3397	2775	2744	3380
Sireli	1575	2037	2017	2120	2515	2475	2771	3066	3086	3658	3544	3982	2803	3901	2550	2578	2838	2873	2603
Sõnumi	4421	3973	3520	3592	3540	3073	2996	3080	2462	2475	2964	2699	3531	1769	3106	3078	3498	3464	3054
Tammiste	3513	3077	3785	3202	2665	3397	2753	2239	3186	2026	1748	1483	2328	2691	3035	3020	2299	2271	3005
Tengo	3557	3150	3943	3327	2775	3582	2931	2401	3421	2272	1935	1732	2427	2983	3208	3194	2402	2379	3182
Tiigi	1635	2097	2064	2177	2574	2525	2827	3124	3135	3715	3603	4040	2863	3953	2604	2632	2898	2932	2658
Tiigiäärse	4646	4192	3764	3821	3750	3313	3217	3277	2701	2657	3134	2845	3728	1985	3336	3308	3693	3659	3283
Tisleri	806	1220	1285	1283	1683	1697	1936	2228	2308	2818	2711	3146	1984	3092	1726	1755	2018	2051	1780
Tõntsu	2993	3086	2015	2701	3254	2346	2996	3528	2641	3764	3997	4286	3598	3429	2721	2733	3611	3623	2744
Uustalu	4486	4039	3578	3657	3607	3133	3063	3149	2523	2545	3033	2767	3600	1837	3171	3143	3566	3533	3119
Vahtra	1651	2131	2198	2256	2620	2646	2910	3178	3258	3785	3647	4089	2894	4061	2699	2728	2930	2965	2753
Visparra 2	3538	3126	3906	3295	2744	3541	2890	2363	3373	2221	1892	1681	2398	2927	3168	3155	2373	2348	3142
Volli	3961	3498	3150	3147	3047	2680	2527	2565	2070	1944	2425	2151	3016	1295	2665	2636	2981	2947	2611
Von Freienthali	1563	2034	2665	2393	2517	2987	2996	3069	3563	3731	3443	3887	2671	4228	2879	2906	2710	2749	2930

## DECIBEL - Map Highest noise value

Calculation: Müra: 13 tuulikut NORDEX N175/6.X Mode 6+ 2dB+trafod



Map: Estonian Land Board Basemaps / Maa-ameti aluskaardid , Print scale 1:45 000, Map center Estonian Lambert L-EST97-EST97 (EE) East: 624 645 North: 6 557 170  
 ▲ New WTG      ■ Noise sensitive area      ■ NEO  
 Noise calculation model: ISO 9613-2:2024 General. Wind speed: Highest noise value  
 Height above sea level from active line object